

**nixeus<sup>®</sup>**

---

# **FUSION HD**

## ***QUICK START GUIDE***

NIXEUS TECHNOLOGY, INC.



*Version 1.1*

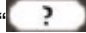
## About This Guide

This Quick Start Guide gives you the information for you to setup your unit and enjoy viewing your multimedia files.

The user manual will describe the unit in more detail.

Please go to [www.nixeus.com](http://www.nixeus.com) to download it.



For quick help, press the “” button on the remote control. (This key function will be supported later through firmware upgrade.)

## Safety Information



WARNING: Failure to follow these safety instructions could result in fire, electric shock, or other injury or damage.

- Read these instructions
- Keep these instructions
- Heed all Warnings
- Follow all instructions
- Do not use this apparatus near water.
- Clean only with dry cloth.
- Do not install near any heat sources such as radiators, stoves, or other apparatus (including amplifiers) that produce heat.
- Unplug this apparatus during lightning storms or when unused for long periods of time.



WARNING: To reduce the risk of electronic shock, do not remove the cover.



WARNING: The device can display static images, which can cause “burn in” on certain display screens.

Avoid leaving static images (such as photos or paused video) on screen for long periods of time.



WARNING: This device should be used only indoors in well-ventilated areas. Do not operate this device outside the temperature range of 41°F~95°F To reduce the risk of fire, electric shock, or interference, do not expose this appliance to rain, liquid, moisture, excessive heat, or naked flame. For technical support, please go to <http://www.nixeus.com>



## CAUTION: About Laser and LED

Use of controls or adjustments, or performance of procedures other than those specified herein may result in hazardous radiation exposure.

This device complies with International Standard IEC 60825-1:2001-08 for a Class 1 and Class 2 laser product.

This device also complies with 21CFR 1040.10 and 1040.11 except for deviations pursuant to Laser Notice No. 50, dated July 26, 2001.

### **Class 1 Laser Devices**

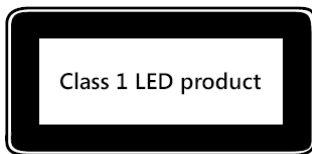
Beam description: Collimated (parallel) beam of infrared light (invisible to user)

Laser power output: < 716 microwatts (at 832 nanometers) to 834 microwatts (at 865 nanometers)

Emitted laser wavelength: nominal: 850 nanometers, range: (832 – 865 nanometers)

A Class 1 laser product is safe under reasonable foreseeable conditions of operation as described by IEC 60825-1 and 21 CFR 1040.10. However, it is recommended that you not direct

the laser beam (which is emitted from the bottom of the device) at anyone's eyes.



## Package Contents

The product package should contain the following items:

- Fusion HD media player
- Remote Control/AAA batteries \* 2
- USB Wi-Fi Dongle
- 12V/2.5A Power supply
- Mini USB to A type USB cable
- HDD SATA Data and power cable (attached in the box)
- AV phone jack to RCA cable
- LAN Cable
- 4 screws for mounting HDD
- Quick Start Guide

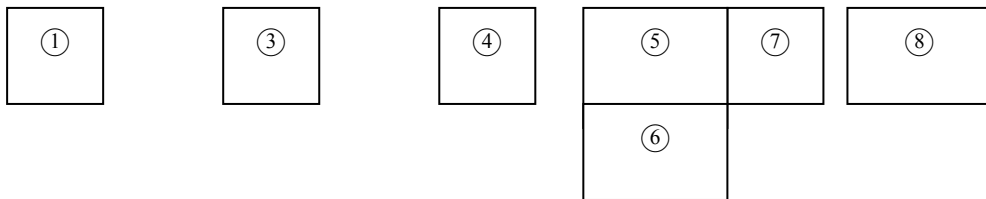


**WARNING:** Ensure you use the power adapter shipped with the unit.

Other power adapters may damage or even destroy the unit.

## Hardware Overview

### Front View



No#	Front Panel Description
①	Power on/Standby LED “Red” ● The power supply is attached but the device has not been powered on yet or the device has been powered off after use. “Orange” ●: The device is in stand by or in the process of turning on. “Green” ● The device is operating.
③	Remote control LED
④	Remote sensor
⑤	eSATA port
⑥	USB host port
⑦	USB client port
⑧	Power On /Off button

## Rear View



No#	Rear Panel Description
①	Power Adaptor
②	LAN
③	USB host port
④	S/PDIF Optical connector
⑤	S/PDIF Coaxial connector
⑥	A/V Phone Jack
⑦	HDMI port

**Standby Mode:** When you press the Power key on the remote control or the On/Off button on the unit, the system will enter standby mode.

**Power Off:** If you want to power off the system, please press the power key on the remote control for more than 2 seconds when the unit is operating or the On/Off button for more than 5 seconds when the unit is in standby mode.


Do Not press the On/Off button for more than 5 seconds when the unit is operating, because this will force the unit to power-off and some data may be lost (eg. BitTorrent downloaded data)

## Installation and Connection

### Video & Audio



- The HDMI port is used for connecting your unit to your TV so you can view high-definition video and audio.
- The Optical and Coaxial S/PDIF connections are for connecting your unit to an external decoder or amplifier for high definition audio.

Press the  hotkey button on the remote control and go to 'System Setup' → 'Audio Setup' to select Analog or Digital Audio Output.

- The A/V Phone jack is for connecting your unit to the CVBS/Analog audio RCA connectors on your TV. The adapter cable pictured below is included in the product package.





## Storage Devices

- The eSATA port is for connecting the unit to your PC so that you can copy files from your PC to the device. eSATA connections are faster than the USB client ports on the device.
- The USB client port is another option for you to connect the unit to your PC and copy files from your PC to the unit.
- The USB host port can be used to connect external HDD enclosures, flash drives, Wi-Fi Dongles, Mice or keyboards to the unit.



## Network Connection

The Ethernet port or wireless dongle are used to connect the unit to your home network router for local area network (LAN) or Internet connections.



## HDD Installation

To install a HDD into your unit, follow the instructions below.

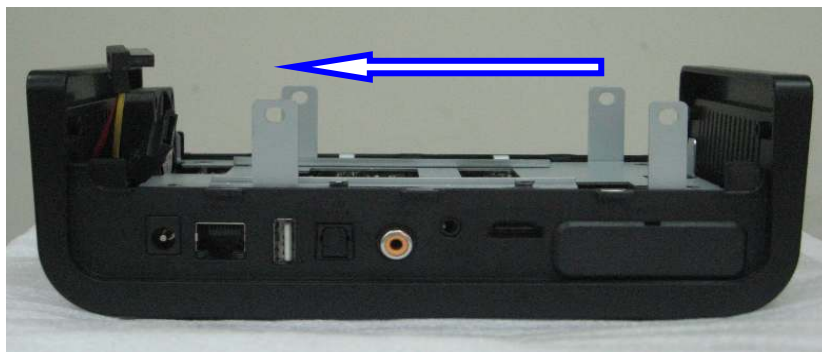
1. Use a screwdriver to remove the screws on the device.



2. Carefully remove the top cover.



3. Fit the HDD in as shown below.



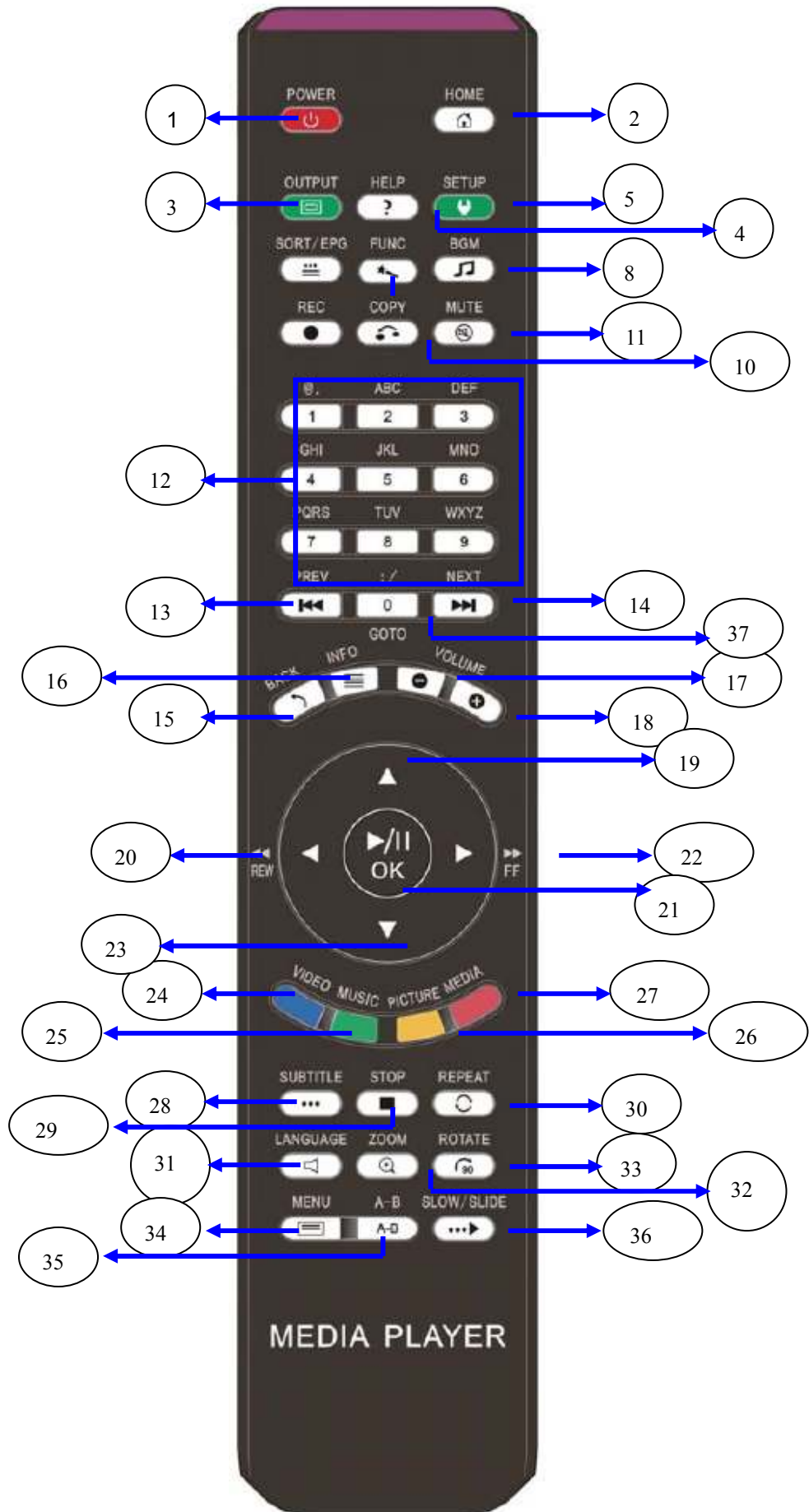
4. Connect the power/data cable to the HDD.



5. Using a screwdriver, secure the HDD to the unit with the 4 screws provided.
6. Refit the cover back onto the unit and secure in place with the screws previously removed.

## Remote Control

The remote control is used to navigate menus and to select and watch videos, listen to music, or view photos on your TV. Please refer to the user manual for full details on each of the buttons.



The table below lists the button functions of the remote control.

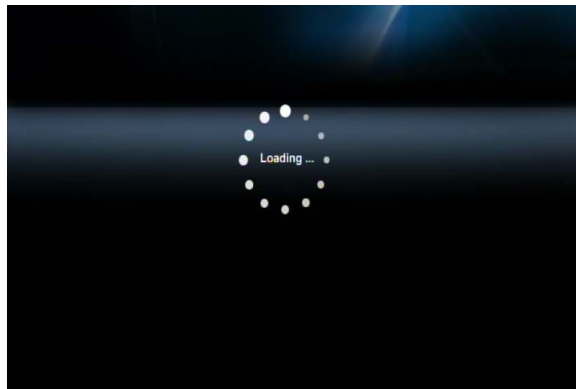
## REMOTE CONTROL KEY FUNCTION TABLE

No.	KEYPAD	FUNCTION DESCRIPTION
1	<b>POWER</b>	Turn the unit On/Off.
2	<b>HOME</b>	Hotkey to return to Main Menu.
3	<b>OUTPUT</b>	Switch the video output type to Composite→HDMI in sequence.
4	<b>HELP</b>	(Reserved)
5	<b>SETUP</b>	Hotkey to the Setup main page.
8	<b>BGM</b>	Add/Remove a music file or iMedia station being used as background music.
10	<b>COPY</b>	Copy files or folders between external USB storage devices and SATA HDD, or delete
11	<b>MUTE</b>	Mute audio output.
12	<b>NUMBERS</b>	1. Input numbers when required. 2. Go to 00%-99% progress of current video or music file.
13	<b>PREV</b>	1. Skip to the previous page when browsing media files. 2. Skip to the previous file when playing media files.
14	<b>NEXT</b>	1. Skip to the next page when browsing media files. 2. Skip to the next file when playing media files.
15	<b>BACK</b>	1. Return to previous page. Save/cancel setting in setup pages. 2. Escape from Web Browser.
16	<b>INFO</b>	Display media info. Pressing twice will show more information.
17	<b>VOLUME</b> —	Decrease the volume.
18	<b>VOLUME</b> +	Increase the volume.
19, 20 22, 23	<b>DIRECTIONS</b>	To move the cursor for item selection.
21	<b>OK/Play</b> <b>Pause</b>	1. Play or pause media files 2. Enter the highlighted item.
24	<b>VIDEO</b>	Press to jump to VIDEO mode
25	<b>MUSIC</b>	Press to jump to MUSIC mode
26	<b>PICTURES</b>	Press to jump to PHOTO mode
27	<b>iMedia</b>	Press to jump to Internet Media mode
28	<b>SUBTITLE</b>	Select different subtitles
29	<b>STOP</b>	Stop playback.
30	<b>REPEAT</b>	1. Video & Music: Repeat current file or Repeat all files in this folder or cancel repeat function. 2. Photo: Repeat Background music.
31	<b>LANG</b>	Select different languages/audio tracks
32	<b>ZOOM</b>	Zoom video or photo.
33	<b>ROTATE</b>	Rotate the picture being viewed.
34	<b>MENU</b>	1. Go to the Menu of DVD films. 2. Choose directory levels when navigating.
35	<b>A-B</b>	Set/Cancel A-B repeat mode.
36	<b>SLOW/SLIDE</b>	Slow forward/backward the media with speed 1/2x, 1/4x, 1/8x...
37	<b>:/</b>	Go to the specified time of current file.

## TV Mode Setup

Please set the video source selector of your TV to match the connection to your unit. For example, if you use HDMI, set the TV to use the correct HDMI input port.


1. Turn on the unit. The LED on the front panel of the PowerZest will turn orange during system loading and then green when it's ready.



START-UP PAGE

2. Check the TV display by going to 'Setup' → 'System Setup' → 'TV Mode Setup' → 'Video Output'.

The default display of the unit is Composite (CVBS). If you use HDMI, use the remote control to

press the  "Output" button and you can cycle through the TV output modes to get the correct display mode.


## Networking

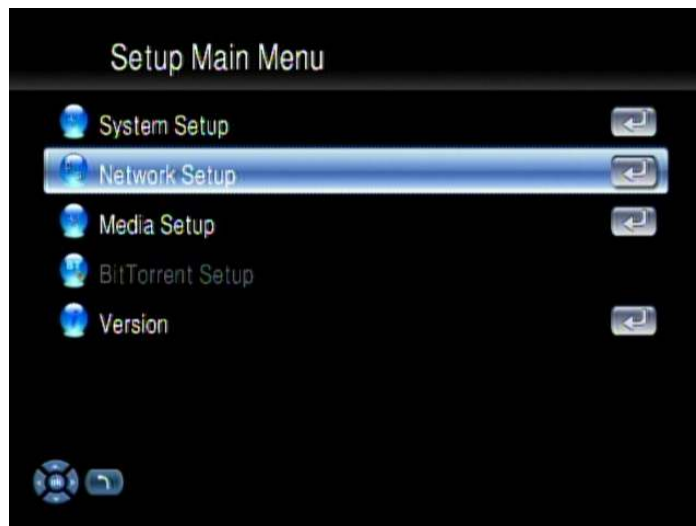
An example of a network with peripheral devices attached is below.



NETWORK DIAGRAM

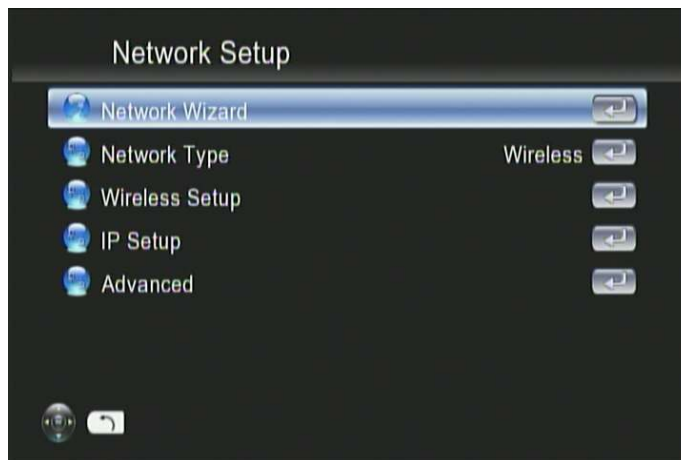
## Wired Network Setup

1. Press the  "Setup" hotkey on the remote control or select "SETUP" mode from the Main Menu.





2. Select "Network Setup" to configure and make changes to your network settings.



3. Once in "Network Setup", Select "IP Setup", and Enable DHCP or set your static IP address according to your network settings.




## Wireless Network Setup

The unit supports wireless networking with a USB Wi-Fi dongle supplied with your unit. To enable wireless function, please make sure you plug the Wi-Fi dongle into the USB port before powering on the unit.

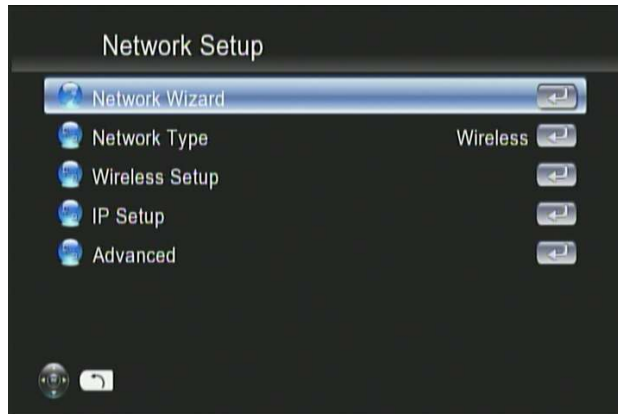
Please note that a USB Wi-Fi dongle not supplied with the unit may NOT be supported.

For high-definition video streaming a wired Ethernet connection between the unit and your network is recommended. Playback of normal video (eg. AVI or XviD) and music and photo viewing is recommended with the wireless connection.

1. Press the  "Setup" hotkey on the remote control or select "SETUP" from the Main Menu.

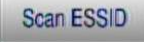


2. Select “Network Wizard” from setup main menu to start the setup wizard.



3. Once the wizard has started, choose the “Wireless” option.



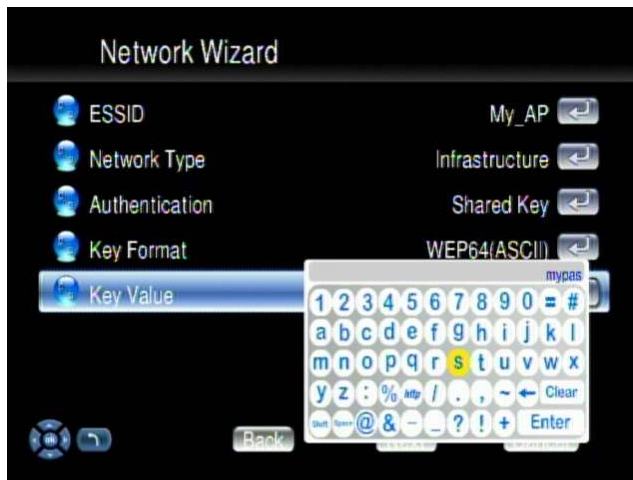
4. Select  to look for all the available wireless networks and choose the one you wish to use.



5. If the network you choose is locked by password, a “Lock” icon will be shown. And the signal strength is indicated by the **red** (poor quality), **yellow** (fair quality) or **green** (good quality) light.



6. Select “Key Value”, and have your password ready to enter.



7. The Key Length of each Key Format is described in the table below.

For WPA and WPA2 format, the unit will detect and switch automatically.

Key Format	Key Length
WEP64(ASCII)	5 digits
WEP64(HEX)	10 digits
WEP128(ASCII)	13 digits
WEP128(HEX)	26 digits
WPA-PSK/WPA2-PSK	8 digits or more

- Input your password and choose “Enter” to save.



## UPnP Servers

The unit will automatically detect all available UPnP AV compliant content servers on boot-up and list them on the UPnP column of the main menu. No additional setup is necessary.

TVersity™ is a popular and free UPnP server software. Please refer to <http://tversity.com> for more information and to download the software.



## Network Shared Folders (Samba Client)

The Samba Client protocol allows the Fusion HD to access media files from samba shares on windows based PCs on the network

As long as there is a connection to your network and there are no firewalls blocking the shares from remote sites, there are no additional steps needed to enable this feature.

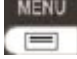
The following steps show how to access media through the Samba Client Protocol.

1. Select "Network Shared Folders" in the main menu and all available sources will be detected and shown automatically.



2. Press the "down" button on the remote control to choose which target machine you wish to navigate to and play back the files on it.



3. Press the "MENU"  button on the remote control to go to the 'directory' bar on the top of the screen.
4. Pressing the numerical buttons on the remote control during navigation will sort the file names by the first letter of the key pressed. This will help you find the file you want when there are many files in the folder list.

Note: If you want to use some functions (like iMEDIA or audio settings etc) while you're navigating directories and files, press the hot keys such as 'HOME', 'SETUP'...on the remote control instead of just pressing the 'BACK' button numerous times. Then it will be quicker to go back to where you were in a long directory path by pressing the 'VIDEO', 'MUSIC' or 'PICTURE' hot keys again.

## Local Storage Devices

The unit supports external USB flash disks, USB HDDs SATA HDDs (via the eSATA port).

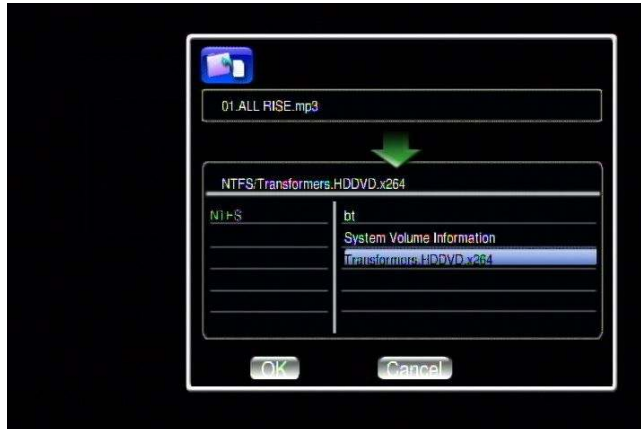
In the main menu select "Removable Device" and navigate to the device to play the files you wish to play.

The number of USB ports can be extended by using an externally powered USB hub, please take into consideration the extra power consumption of the additional devices as the unit itself supplies only a limited amount of power to the USB port.

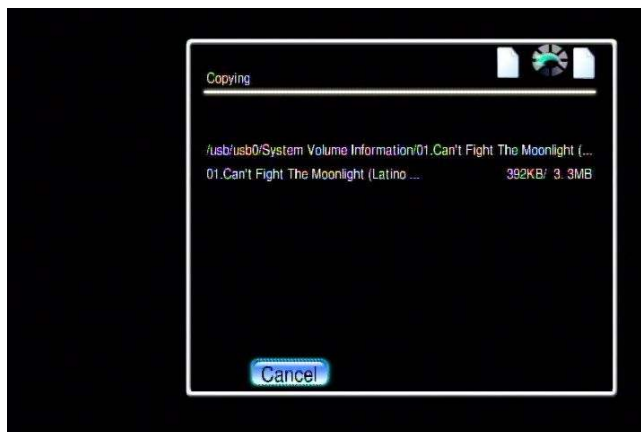


## File Management by Remote Control

1. Go to “Removable Device” on the Main Page.
2. Select the name of your storage device from the list and press “COPY”.



3. Select the source and destination then Press “OK” to proceed or “No” to go back.





## Copy/Delete local files from your PC

The unit supports Samba server function which shares your local storage space with a client PC over the network. For PC with a Windows OS installed it is known as My Network Places.

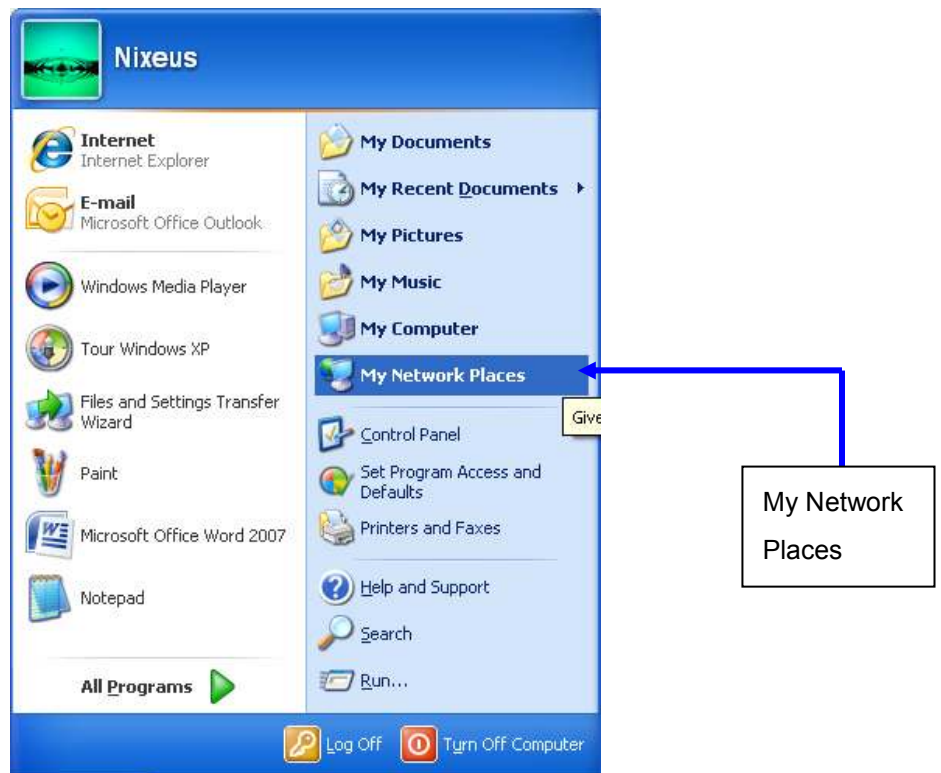
To access your unit, type in the IP address of your unit (which you can find by checking in 'Setup') onto the address bar of the file manager on the remote PC and press the enter key to continue.

The default user name and password to login are both "admin".

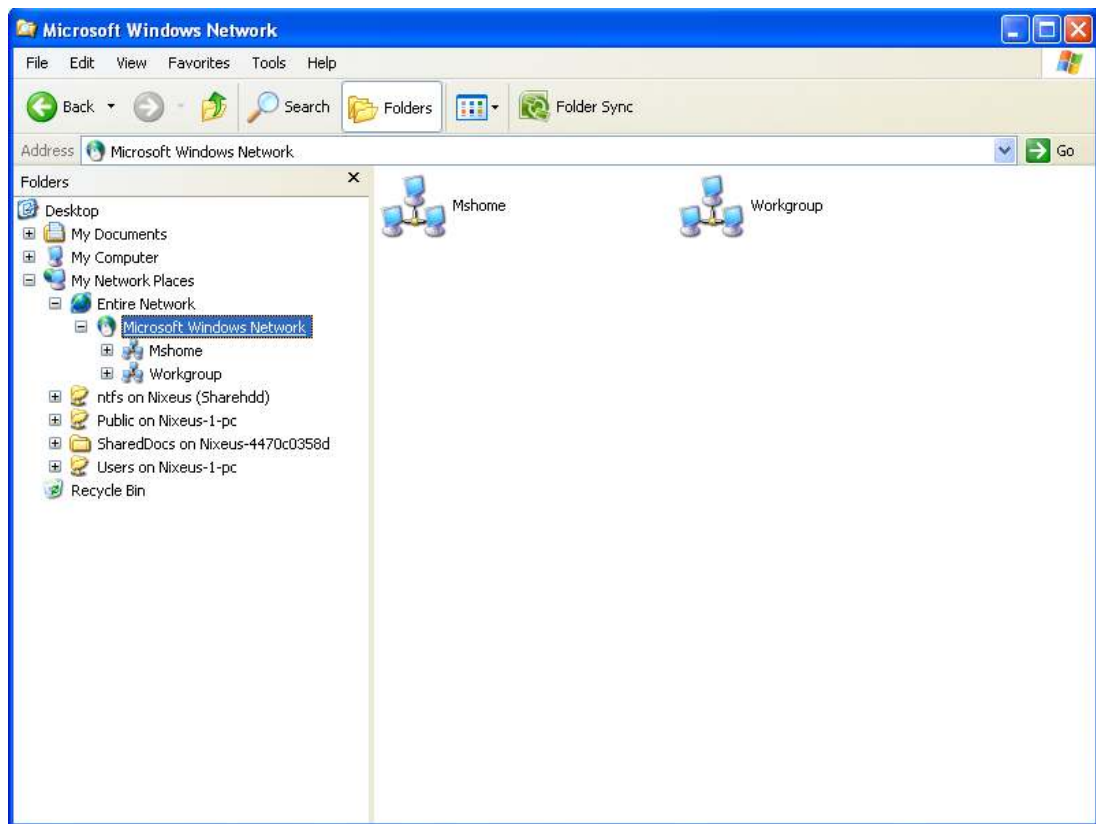
The following example is an alternative way based on the Microsoft Windows XP platform.

Please note that when both eSATA HDD and USB disks exist, the eSATA device will be the sole storage device in this instance

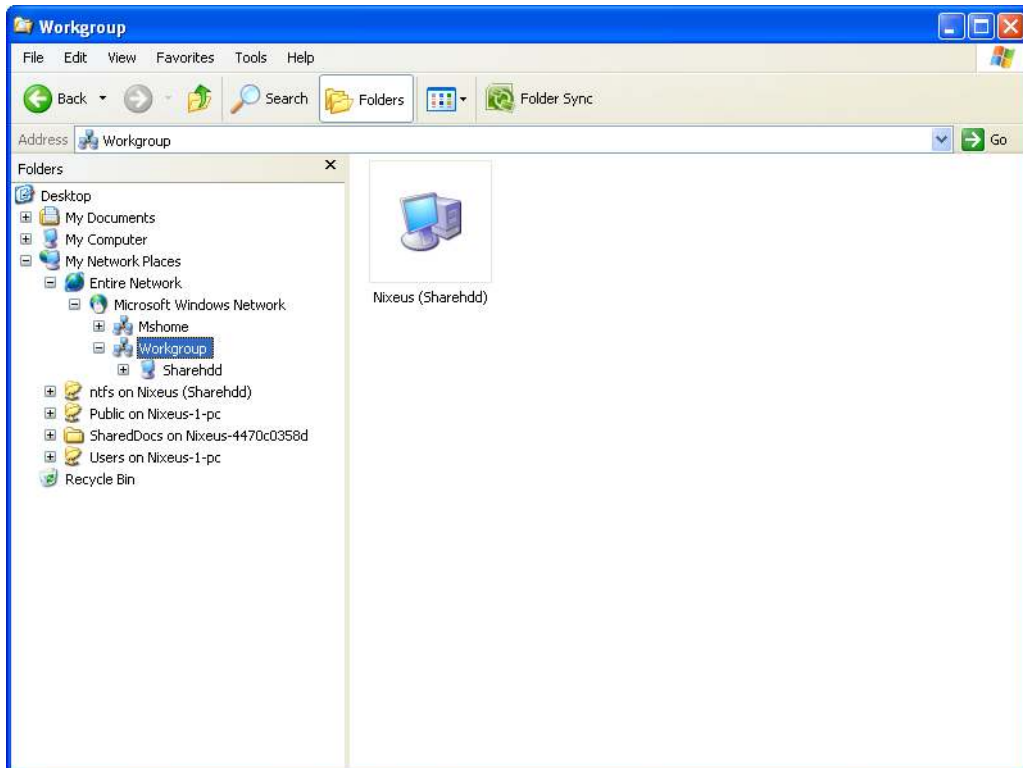
1. Click the "My Network Places" icon on your PC.



2. Click “Entire Network” → “Workgroup”



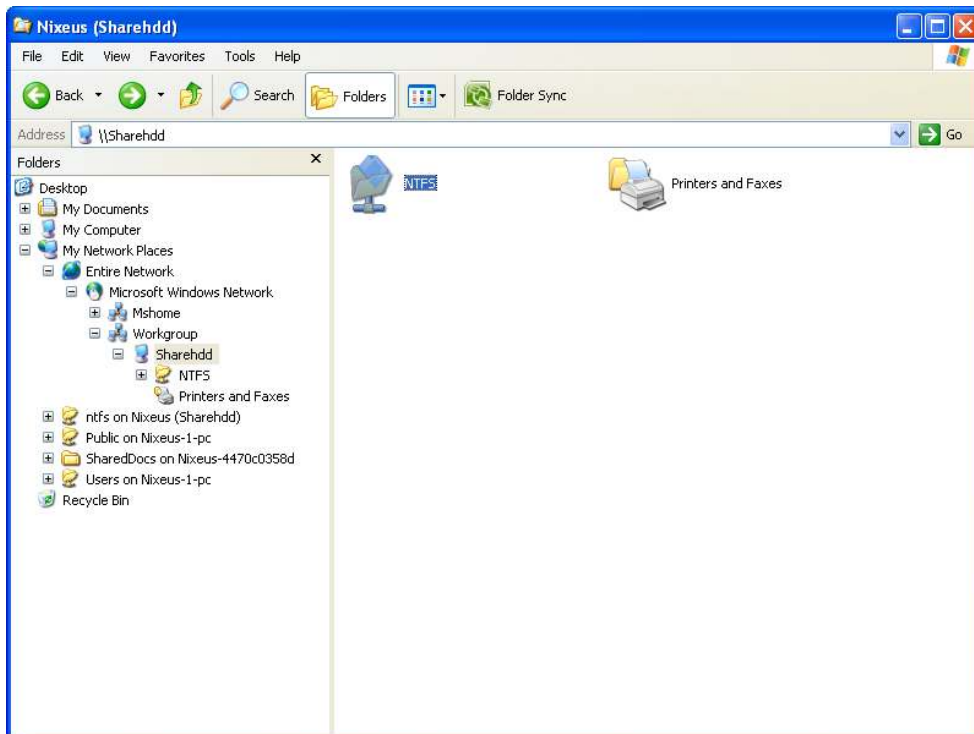
3. The units default local network location is “Workgroup”. Double click “Workgroup” and you should see the unit listed as an icon.



4. Double click the icon and a login menu will pop up. Input the default user name and password “admin” and click “OK” to continue.



5. You can use a mouse to copy, move and delete your media files between your PC the units local HDD.



## Music, Photo & Video Playback

For detailed information on supported file formats, refer to the user manual.

Some the functions that are more regularly used are highlighted in the following pages:

## Viewing Video Information

1. Press the "Info" button to display the video information.

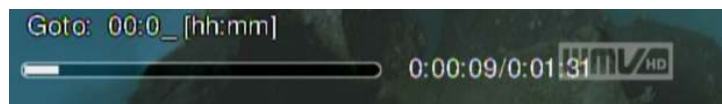


2. Press the button again to see any additional info.

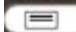


## Viewing elapsed time and percentage played of file

1. To view elapsed time and the percentage of a music or video file being played, press the “0(GOTO)” button on the remote control to enter time seek mode, and press the numeric buttons directly for the percentage of time in the file being played that you wish to view.



2. Photo Slide Show: Press ‘OK’ on the selected photo thumbnail to view it full-screen display and **press again** to start the slide show.

3. Location Directory Navigation: Press the “MENU”  button to go to the ‘directory’ bar on the top of the screen. By pressing the numerical buttons on the remote control during navigation will sort the file names by the first letter of the key pressed. This will help you find the file you want when there are many files in the folder list.



4. If you want to use some functions (like iMEDIA or audio settings etc) while you’re navigating directories and files, press the hot keys such as ‘HOME’, ‘SETUP’...on the remote control instead of just pressing the ‘BACK’ button numerous times. Then it will be quicker to go back to where you were in a long directory path by pressing the ‘VIDEO’, ‘MUSIC’ or ‘PICTURE’ hot keys again.

----- For more information in detail, please refer to the User Manual -----